



# DESIGN CENTRE

**Intercontinental Consultants and  
Technocrats Private Limited**

Value | Engineering | Commitment

# KEY BUSINESS VERTICALS



Expressways and Highways



Tunnels



Bridges and Other Structures



Railways and Metro Rails



Airports and Aviation System



Urban Regional Planning and Smart City Solutions



Traffic Transportation and Road Safety



Building and Architecture



Institutional Strengthening and Capacity Building



Transaction and Project Finance



Water Resources and Public Health Engineering



Environmental and Social Sciences

# ACHIEVEMENTS

<b>Consultancy Assignments</b>	Nearly <b>900</b>	<b>Tunnels</b> Detailed Design/DPR of Road/Rail/Metro Tunnels	Over <b>180</b> Kms
<b>Expressways and Highways</b> Feasibility and Detailed Engineering Design	Over <b>70,500</b> Kms	<b>Tunnels</b> Construction Supervision/Project Management of Road / Rail Tunnels	Over <b>90</b> Kms
<b>Expressways and Highways</b> Construction Supervision/Project Management/ Independent Engineer/Authority's Engineer	Nearly <b>30,000</b> Kms	<b>Airport and Aviation System</b> Airport Projects involving Planning, Design & Supervision and Project Management.	Over <b>60</b>
<b>Bridges and Other Structures</b> Detailed Design and DPR	Over <b>5,800</b>	<b>Railways and Metro Rails</b> Projects of Railways and Metro Rails	Nearly <b>85</b>
<b>Bridges and Other Structures</b> Construction Supervision/Project Management	Over <b>3,600</b>	<b>Environmental and Social Sciences</b> Environmental Impact Assessment / Social Impact Assessment Projects	Over <b>700</b>
<b>Transaction and Project Finance</b> Transaction & Financial Advisory for Projects	Over <b>USD 7 Bn</b> Capital Value	<b>Urban Regional Planning and Smart City Solutions</b> Master Plan/City Development Plans/Smart City/ Project Implementation	Nearly <b>80</b> Cities & Towns

# AFFILIATIONS



Asian Development Bank



The World Bank



International Bank for Reconstruction and Development



African Development Bank



Japan International Cooperation Agency



Kuwait Fund for Arab Economic Development



German Development Bank



European Bank for Reconstruction and Development



Asian Infrastructure Investment Bank



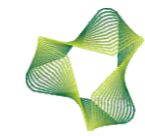
EXIM BANK  
भारतीय निर्यात-आयात बैंक  
EXPORT-IMPORT BANK OF INDIA



Millennium Challenge Corporation



French Development Agency



New Development Bank



United Nations Development Programme



Abu Dhabi Fund for Arab Economic Development



International Civil Aviation Organization

# MEET OUR MANAGEMENT

# AWARDS & ACCOLADES



## K.K. KAPILA, CHAIRMAN

Mr. Kiran Kumar Kapila, Founder & Chairman of the company is credited with steering ICT to one of the premier consulting companies in India and has attained International stature for himself.

He is presently Chairman of the International Road Federation (IRF), Geneva Chapter and Co-Chairs the FICCI's Infrastructure committee. Mr. K.K. Kapila has been appointed as a "FIDIC Ambassador" for the period 2022-2024. He is also President of Indian Building Congress, an ADB Consultant and the Vice President of Indian Road Congress. He has been an "Engineer" as per FIDIC conditions of Contract on nearly 100 projects

Mr. K.K. Kapila has an experience of more than five decades.

## PRASHANT KAPILA, MANAGING DIRECTOR

Prashant Kapila, a prominent figure in Civil & Environmental Engineering, holds a post-graduation degree from Carnegie Mellon University, USA, since 2000. His journey at ICT, an ISO 9001:2015 certified global consultancy operating across 50 countries, commenced as COO in 2010 and progressed to Managing Director in February 2022, underlining his dynamic leadership.

In 2023, Mr. Kapila joined the FIDIC board, solidifying his global influence in engineering. He actively engages in industry associations, notably contributing to the Young Professionals Forum at CEAI and FIDIC, aligning with international sustainable development guidelines. His dedication earned him the FIDIC Young Professional Award in 2017 at the Jakarta Conference.



## S.K. PURI, EXECUTIVE DIRECTOR

Suresh Kumar Puri is a seasoned professional with a BTech in Civil Engineering and a Masters in Structural Engineering from IIT Delhi. With over 40 years of experience, he has held key roles, including Director General (Road Development) and Special Secretary at the Ministry of Road Transport and Highways (MORTH), and Member (Technical) at NHAI. His expertise spans Project Management, Model Construction Agreements, and PPP Projects. At ICT, he oversees Foreign Projects in Ethiopia, Tanzania, and Bangladesh, while also serving as an Independent Engineer/Authority Engineer for several Indian highway projects. Actively engaged in organizations like IRC, IRF, and INGIABSE, he continues to shape the infrastructure landscape.

## ASEEM PRABHAKAR, EXECUTIVE DIRECTOR

Aseem Kumar Prabhakar boasts of a Bachelor's Degree in Civil Engineering and a Post-graduation in Transport Engineering, accumulating over 25 years of experience. His expertise spans feasibility studies, detailed engineering design, and construction supervision for major highway projects, along with traffic and transportation studies, both in India and abroad. In his current role, he oversees various departments, including Highways, Bridges, Pavement Material & Geotechnical, Quantity Surveying & Contracts. Additionally, he serves as an Independent Engineer on multiple projects. Mr. Prabhakar is a distinguished member of organizations like IRC, Indian Building Congress, Consulting Engineers Association of India, Indian Geotechnical Society, and the Institution of Engineers India.



Louis Prangey Award 2025, for Outstanding Service to the Global Consulting Engineering Industry and Exceptional Contributions to FIDIC.



FIDIC Asia-Pacific Powerhouse Award 2025 for excellence in infrastructure- the iconic Sonamarg Tunnel Project



FIDIC Projects Award 2022 for Atal Tunnel in the Category 'Highly Commended for Transportation - Tunnel'



Autodesk Imagine Award in the field of Architecture, Engineering & Construction and 'Design Innovation in Building' for Mumbai Metro Line 3



The Arch of Europe for Quality and Technology in Gold Category



ERA Award Diamond Category Geneva



Niryat Shree Award for Outstanding Export Service Provider



IEI Industry Excellence Award in the category of 'Engineering Services and Consultancy'



Assocham Award for Design & Project Management Consultancy for Bundelkhand Expressway



Assocham Award for Leading PMC and Engineering Consultants for Airports



Niryat Shree Award for Outstanding Performance in Consultancy Services



International Bentley Award for Design Excellence

# SIGNATURE PROJECTS



**India:** Atal (Rohtang) Tunnel, Length - 9.02Km  
World's longest Single Tube Bi-directional Tunnel at an altitude of 3000m above MSL  
**Scope:** Construction Supervision



**India:** Zojila Tunnel (Length - 13.145Km)  
Asia's longest Single Tube Bi-Directional Tunnel at an altitude of 11578m above MSL  
**Scope:** Authority Engineer for Construction Supervision



**India:** NH-44, Ramban Banihal Section (Total Length - 15.976Km)  
**Scope:** Feasibility Study, Detailed Design & Construction Supervision



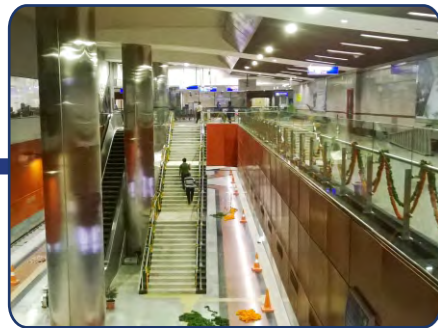
**India:** Z-Morh Tunnel (Length - 6.412Km)  
Single Tube Bi-Directional  
**Scope:** Independent Engineer for Construction Supervision



**India:** Mumbai Metro Line-3, Underground Corridor (UGC-03)(Total Length - 7.57Km TBM Tunnel)  
**Scope:** Detailed Design & Design Support during Construction



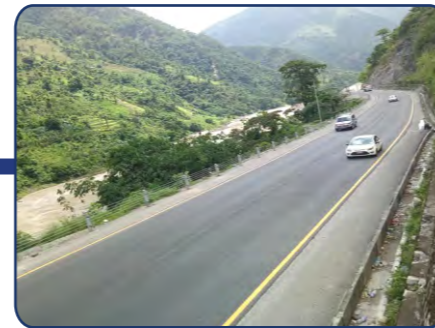
**India:** Vadodara-Mumbai Expressway (8 Lane, 473Km) including Tunnel, Length (4.16Km)  
**Scope:** Feasibility Study, Preliminary Design & Detailed Design



**India:** Janpath & Mandi House Metro Stations (CC01)  
**Scope:** Detailed Design



**India:** Consultancy Services for Detailed Project Report cum Transaction Advisory Services for Karnataka State Highway Improvement Project -III (KSHIP-III) - Group II, funded by ADB



**Nepal:** Detailed Design of Improvement of Kathmandu Naubise Mugling Road and Bridges Length 121.50Km World Bank Funded

# SIGNATURE PROJECTS



**India:** Phaphamau Bridge over River Ganga (6 lane, 3.839Km - Extradosed)  
**Scope:** Feasibility Study, Detailed Design & Construction Supervision



**Bangladesh:** Paira Bridge (4 Lane, 1.47Km - Extradosed), KFAED funded  
**Scope:** Detailed Design, Bid Management & Construction Supervision



**India:** High Speed Rail Corridor (New Delhi - Kolkata) (Length: 1474.48Km)  
**Scope:** Feasibility Study/Preliminary Design



**Mongolia:** Bogdkhan Railway Bypass Investment Program - 01 (Length: 166.44Km, including 3 Tunnels of Length 15.16Km), ADB funded  
**Scope:** Alignment Study



**India:** Bhuj and Rajkot Railway Station  
**Scope:** Authority Engineer for Construction Supervision



**Nepal:** Terminal Building (T2) of GBAUP at Bhairahawa  
**Scope:** Detailed Design & Construction Supervision



**India:** Shirdi Airport  
**Scope:** Project Management Consultancy



**India:** Rail link between Rishikesh & Karanprayag (Package 2 & 5) (Length: 25.06 Km)  
**Scope:** Detailed Design & Project Management



**Kenya:** Integrated Strategic Urban Development Plans for Cluster 1 Mombasa Town, World Bank funded  
**Scope:** Integrated Strategic Urban Development Planning & Capital Investment Planning

In a rapidly evolving global business landscape, the demand for innovation, efficiency, and top-tier engineering expertise has never been more critical. Today, companies face the challenge of not only staying competitive but also staying ahead of the curve in a world where cutting-edge engineering design is the cornerstone of success. This is where our Design Centre steps in as your trusted partner.

At Design Centre, we redefine the possibilities of engineering design. With a passion for innovation and a commitment to excellence, we are a beacon of creative solutions and engineering brilliance in a complex and ever-changing world.

Our Design Centre is not just another service provider; we are your strategic ally in navigating the dynamic terrain of modern engineering. We understand that your projects demand precision, vision, and unwavering dedication. That's why we have assembled a team of highly skilled engineers, designers, and problem-solvers who are not just experts in their fields, but who share your enthusiasm for pushing the boundaries of what's possible.

At Design Centre, we don't just provide outsourcing services; we deliver a partnership rooted in trust, expertise, and a shared vision. Whether you're in need of product design, structural engineering, CAD modeling, or any other facet of engineering design, we're here to be the driving force behind your success. Our commitment to quality, innovation, and cost-efficiency is unwavering, and our dedication to your objectives is unparalleled.

As we embark on this journey together, we invite you to explore the infinite possibilities our Design Centre has to offer. We understand that your business deserves nothing but the best, and that's precisely what we deliver.

Reimagine engineering design, one project at a time, and elevate your company to new heights of excellence.

Welcome to the future of engineering design. Welcome to Design Centre.



By partnering with us, you can significantly reduce your operational and capital expenses. We can offer cost-effective solutions, leveraging our expertise and cost-effective resources to save you money.

Our team comprises highly skilled professionals with deep knowledge in infrastructure design. You can tap into this specialized expertise without the need to maintain an in-house team, ensuring that your infrastructure projects are in the hands of experts.



Outsourcing allows you to concentrate on your core competencies. Instead of diverting resources to infrastructure design, you can channel your efforts and resources towards what truly sets your business apart in the market.

We provide the flexibility to adjust your infrastructure design needs as they evolve. Whether you need to scale up or down, we can adapt quickly to your requirements, saving you the hassle of hiring or letting go of staff.



Infrastructure projects often come with risks. By outsourcing to us, you can share some of the project risks. We commit to meeting performance and delivery standards, mitigating the uncertainties you may face in managing these projects in-house.

With our expertise, we can expedite the development and implementation of your infrastructure projects. This speed can give you a competitive edge by bringing your products and services to market faster.



We offer access to a global talent pool, ensuring that you benefit from diverse skills and experiences, which may not be readily available in your local market.

We are well-versed in compliance and regulations, both locally and internationally. This ensures that your infrastructure design adheres to all necessary legal and regulatory requirements, reducing your compliance-related headaches.



Managing an in-house team can be resource-intensive. By partnering with us, you can delegate a significant portion of the management responsibilities, allowing your internal teams to focus on strategic tasks.

We stay up-to-date with the latest industry trends and innovations, ensuring that your infrastructure design benefits from the most current and relevant technologies.



# COMPETENCE OF DESIGN CENTRE

## SERVICES OFFERED

- Geometric and Roadside Furniture
- Junctions
- Pavement
- Hydrology and Drainage
- Lighting
- Toll Plaza and Toll Collection System
- Noise Mitigation
- Rest Area
- Traffic Modelling
- Road Safety Audit

## SOFTWARE PROFICIENCY

- Autodesk Civil 3D
- BIM Collaborate Pro
- MX Road
- HDM 4
- KENPAVE
- Arc GIS and Geo Slope
- HEC-RAS
- HEC-HMS
- Vsim
- IT Pave

## KNOWLEDGE OF CODES

- AASHTO Green Book
- BS Codes
- Austroads
- SATCC
- IRC

## EXPRESSWAYS AND HIGHWAYS



## SERVICES OFFERED

- **Planning and Design of Airports:**
- Architecture & Structures of Airside and City side assets including Passenger Terminal Building, Airport Rescue and Fire fighting Building, Maintenance and Energy Centre Buildings
- Runway, Taxiways, Apron. This includes Structural and Geometric aspects
- Airfield Ground Lighting (AGL) to include, Runway, Taxiway and Apron Lighting Schemes

## SOFTWARE PROFICIENCY

- FAARFIELD

## KNOWLEDGE OF CODES

- ICAO International Standards (Annex 9 & 14)
- Aerodrome Design Manual (Doc 9157 & DOC 9184)
- FAA Documents (AC 150/5360/13 & 14)
- Airport Design Reference Manual
- Published by IATA (10<sup>th</sup> Edition)

## AIRPORTS AND AVIATION SYSTEM



## SERVICES OFFERED

- **Design of various types of Bridges:**
- Solid and Voided Slab (RCC, PSC)
- Tee Beam Girders with Slab (RCC, PSC, Steel Composition)
- PSC Box Girder
- Box Type Bridges
- Segmental Box Structure
- Steel Truss
- Arch Type & Bowstring
- Suspension Type
- Balanced Cantilever Type
- Extradosed Type
- Cable Stayed Type
- Continuous Superstructure with Diaphragm/Deck Continuity
- Integral Type

## SOFTWARE PROFICIENCY

- MIDAS Civil
- STAAD Pro
- Oasys
- ADAPT

## KNOWLEDGE OF CODES

- IRC Codes
- AASHTO Codes
- Euro Codes
- BS Codes
- AS Codes

## BRIDGES AND VIADUCTS



## SERVICES OFFERED

- **Design of Tunnel Elements:**
- Alignment of Tunnels
- Tunnel Cross-sections
- Tunnel Support Systems
- Portals
- Emergency Exits

## SOFTWARE PROFICIENCY

- Rock Science 2 (RS-2)
- Rock Support

## KNOWLEDGE OF CODES

- IRC:SP-91
- ITA Guidelines
- ISRM Guidelines
- Euro Codes

## TUNNELS



## SERVICES OFFERED

- **Design of Metro Structures:**
- Underground Stations including Interchange Stations
- TBM & NATM Tunnel including Cross Passages
- Cut & Cover Tunnel, Underground Ramp & Launching and Retrieval Shafts
- Viaduct & Elevated Ramp
- Elevated Stations including
- Interchange Stations
- Depot/Workshop Building
- Road Safety Audit

## SOFTWARE PROFICIENCY

- STAAD Pro Advanced
- WALLAP
- Rock Science 2
- OASYS Adsec
- DIPS
- RocPlane
- RocTopple
- Swedge
- REVIT

## KNOWLEDGE OF CODES

- BIS Codes
- IRS Codes
- IRC Codes
- Euro Codes
- AASHTO Codes
- BS Codes
- ITA Guidelines
- Austrian Guidelines for Tunneling

## METRO STRUCTURES



## SERVICES OFFERED

- **LOS and Evacuation Calculations for any type of Public Building including Transport Terminal**
- **Building Information Modelling (BIM) Services**
- **Planning and Design of:**
- Building structures – Industrial, Commercial Complexes, Railway Stations, High Speed Rail Stations
- MEP of buildings, Railway stations, High Speed Rail Stations, Airports
- E&M of Underground metro Stations
- Proving Grounds (Vehicle Test Tracks)
- Transport Terminals like Metro Stations,
- Airport Terminals, Railway Stations etc.

## SOFTWARE PROFICIENCY

- STAADPRO
- AutoCAD
- REVIT
- NAVISWORK
- ETABS
- SAFE
- ARC GIS
- BIM 360
- Sketchup
- Lumion

## KNOWLEDGE OF CODES

- IS Codes
- Euro Codes
- BS Codes
- SANS Codes
- IRC Codes

## URBAN REGIONAL PLANNING AND SMART CITY SOLUTIONS



## SERVICES OFFERED

- **Design of Architecture :**
- Architecture design of Transport terminals like Metro Stations, Airport Terminals, Railway Stations etc.
- LOS and Evacuation calculations for any type of public building including Transport terminals
- Architecture Concept and Preliminary Design for any type of Buildings as per client's requirements.
- Architecture Detailed Design
- Architecture finishing
- Building Information Modelling (BIM) Services
- 3D Visualization
- Walkthroughs

## SOFTWARE PROFICIENCY

- AutoCAD
- Revit
- NAVISWORK
- BIM 360
- Sketchup
- Lumion

## KNOWLEDGE OF CODES

- IS Codes
- BS Codes
- NFPA Codes
- IBC
- NBC

## ARCHITECTURE





## Contact Us:

**Head Office:**

-  A-8 & A-9, Green Park  
New Delhi - 110 016, India
-  [business@ictonline.com](mailto:business@ictonline.com)
-  [www.ictonline.com](http://www.ictonline.com)
-  + 91-11-40863000

**Kolkata Office:**

-  Plot No. 1202, 12th Floor Godrej  
Genesis Building, Block EP & GP  
Saltlake, Sector V  
Kolkata - 700091, India
-  [admin.kolkata@ictonline.com](mailto:admin.kolkata@ictonline.com)
-  [www.ictonline.com](http://www.ictonline.com)
-  + 91-9874198441